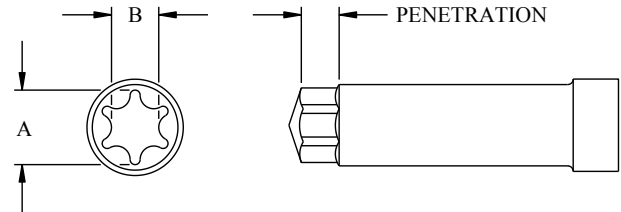


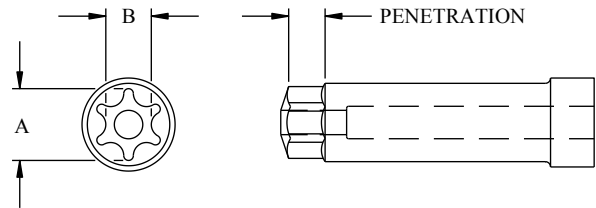
Punch Pin Blanks

Part Number	Drive Size	A inch/mm	B inch/mm	Minimum Pen inch/mm
RL5-B	5	.059/1.49	.043/1.09	.035/.89
RL6-B	6	.070/1.77	.050/1.29	.045/1.14
RL8-B	8	.095/2.41	.069/1.75	.055/1.40
RL10-B	10	.111/2.81	.081/2.05	.065/1.65
RL15-B	15	.132/3.35	.096/2.43	.075/1.91
RL20-B	20	.155/3.93	.112/2.85	.095/2.41
RL25-B	25	.178/4.53	.129/3.27	.120/3.05
RL27-B	27	.200/5.09	.144/3.67	.125/3.18
RL30-B	30	.221/5.62	.160/4.06	.130/3.30
RL40-B	40	.267/6.78	.192/4.89	.140/3.56
RL45-B	45	.313/7.95	.224/5.68	.160/4.06
RL50-B	50	.353/8.96	.256/6.50	.180/4.57
RL55-B	55	.447/11.35	.318/8.09	.220/5.59



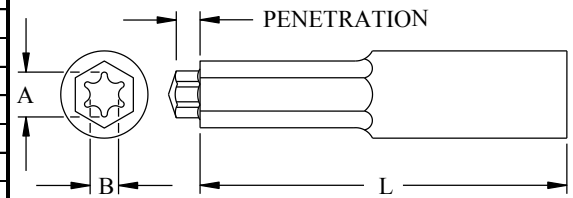
Tamper Resistant Punch Pins

Part Number	Drive Size	A inch/mm	B inch/mm	Penetration inch/mm
RL8-1-T	8	.095/2.41	.069/1.75	.035/.89
RL10-1-T	10	.111/2.81	.081/2.05	.040/1.02
RL15-1-T	15	.132/3.35	.096/2.43	.045/1.14
RL20-1-T	20	.155/3.93	.112/2.85	.050/1.27
RL25-1-T	25	.178/4.53	.129/3.27	.055/1.40
RL27-1-T	27	.200/5.09	.144/3.67	.065/1.65
RL30-1-T	30	.221/5.62	.160/4.06	.070/1.78
RL40-1-T	40	.267/6.78	.192/4.89	.097/2.46
RL45-1-T	45	.313/7.95	.224/5.68	.110/2.79
RL50-1-T	50	.353/8.96	.256/6.50	.110/2.79
RL55-1-T	55	.447/11.35	.318/8.09	.145/3.68



Hexagon Washer Pin (One-Piece)

Part Number	Drive Size	A inch/mm	B inch/mm	Length inch/mm	Penetration inch/mm
RL8-HWP	8	.095/2.41	.069/1.75	1.277/32.44	.036/.914
RL10-HWP	10	.111/2.81	.081/2.05	1.277/32.44	.045/1.14
RL15-HWP	15	.132/3.35	.096/2.43	1.277/32.44	.050/1.27
RL20-HWP	20	.155/3.93	.112/2.85	1.277/32.44	.065/1.65
RL25-HWP	25	.178/4.53	.129/3.27	1.277/32.44	.070/1.78
RL27-HWP	27	.200/5.09	.144/3.67	1.277/32.44	.080/2.03
RL30-HWP	30	.221/5.62	.160/4.06	1.559/39.60	.095/2.41
RL40-HWP	40	.267/6.78	.192/4.89	1.559/39.60	.115/2.92
RL45-HWP	45	.313/7.95	.224/5.68	1.559/39.60	.140/3.56



1. Punch Pin materials:
 - M2 at RC 61-64
 - M42 at RC 63-65
 - Carbide: D60 and D70 available. Specify when ordering
2. Special penetrations available. Specify required penetration when ordering.
3. Oversize pins available for heavy or hot heading plating applications.
4. PVD Coatings available for cold & hot heading applications.