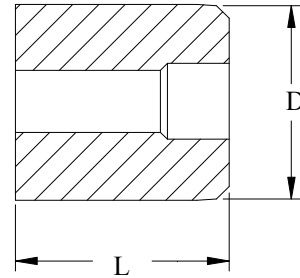


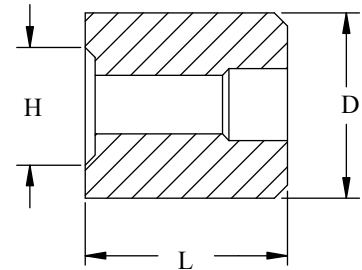
Flat Head

Part Number	Drive Size	Screw Size	D inch/mm	L inch/mm
RLA5-FL	T5	1	.562/14.27	.375/9.53
RLA6-FL	T6	2	.562/14.27	.375/9.53
RLA8-FL	T8	3	.562/14.27	.375/9.53
RLA8-FL	T8	4	.562/14.27	.375/9.53
RLA10-FL	T10	5 & 6	.562/14.27	.625/15.88
RLA15-FL	T15	8	.562/14.27	.625/15.88
RLA20-FL	T20	10	.562/14.27	.625/15.88
RLA25-FL	T25	12	.875/22.23	.625/15.88
RLA27-FL	T27	1/4	.875/22.23	.625/15.88
RLA30-FL	T30	1/4	.875/22.23	.625/15.88
RLA40-FL	T40	5/16 & 3/8	.875/22.23	.750/19.05
RLA45-FL	T45	3/8	1.000/25.40	1.000/25.40
RLA50-FL	T50	7/16 & 1/2	1.000/25.40	1.000/25.40
RLA55-FL	T55	9/16	1.250/31.75	1.000/25.40



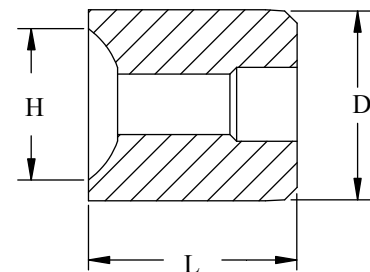
Socket Head

Part Number	Drive Size	Screw Size	D inch/mm	L inch/mm	H inch/mm
RLA6-SH	T6	2	.562/14.27	.380/9.65	.143/3.63
RLA8-SH	T8	3	.562/14.27	.385/9.78	.161/4.09
RLA10-SH	T10	4 & 5	.562/14.27	.634/16.10	.183/4.63
RLA15-SH	T15	6	.562/14.27	.635/16.13	.230/5.84
RLA25-SH	T25	8	.562/14.27	.635/16.13	.273/6.93
RLA27-SH	T27	10	.562/14.27	.638/16.21	.316/8.03
RLA30-SH	T30	1/4	.562/14.27	.643/16.33	.379/9.63
RLA45-SH	T45	5/16	.875/22.23	1.020/25.91	.474/12.04
RLA50-SH	T50	3/8	1.000/25.40	1.025/26.04	.567/14.40
RLA55-SH	T55	7/16 & 1/2	1.250/31.75	1.030/26.15	.661/16.75



Button Head

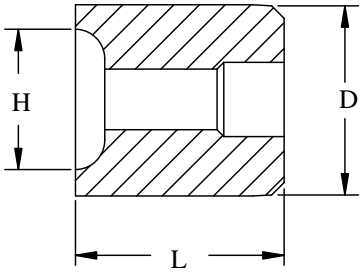
Part Number	Drive Size	Screw Size	D inch/mm	L inch/mm	H inch/mm
RLA6-BH	T6	2	.562/14.27	.408/10.36	0.171/4.34
RLA8-BH	T8	4	.562/14.27	.410/10.41	0.222/5.64
RLA10-BH	T10	6	.562/14.27	.680/17.27	0.272/6.91
RLA15-BH	T15	8	.562/14.27	.692/17.58	0.324/8.23
RLA25-BH	T25	10	.562/14.27	.705/17.91	0.375/9.53
RLA27-BH	T27	1/4	.875/22.23	.733/18.62	0.454/11.53
RLA40-BH	T40	5/16	.875/22.23	.885/22.48	0.569/14.45
RLA45-BH	T45	3/8	1.000/25.40	1.165/29.59	0.682/17.32
RLA55-BH	T55	1/2	1.250/31.75	1.218/30.94	0.910/23.11



1. M2 material at RC 60-62.
2. Special Head Styles, Head markings and Materials available per request.

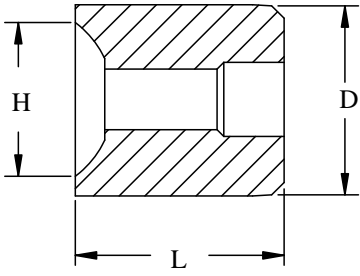
Pan Head

Part Number	Drive Size	Screw Size	D inch/mm	L inch/mm	H inch/mm
RLA6-PH	T6	1	.562/14.27	.400/10.16	
RLA8-PH	T8	2	.562/14.27	.645/16.38	.161/4.09
RLA8-PH-2	T8	3	.562/14.27	.645/16.38	.186/4.72
RLA10-PH	T10	5	.562/14.27	.648/16.46	.212/5.38
RLA10-PH-2	T10	6	.562/14.27	.650/16.51	.238/6.05
RLA15-PH	T15	8	.562/14.27	.652/16.56	.263/6.68
RLA20-PH	T20	10	.562/14.27	.657/16.69	.314/7.98
RLA25-PH	T25	12	.562/14.27	.663/16.84	.365/9.27
RLA27-PH	T27	1/4	.875/22.23	.668/16.97	.416/10.57
RLA30-PH	T30	1/4	1.000/25.40	.675/17.15	.482/12.24
RLA40-PH	T40	5/16	1.000/25.40	.812/20.62	.604/15.34
RLA45-PH	T45	3/8	1.250/31.75	1.074/27.28	.727/18.47



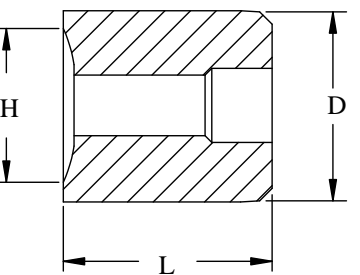
Truss Head

Part Number	Drive Size	Screw Size	D inch/mm	L inch/mm	H inch/mm
RLA8-TH	T8	4 & 5	.562/14.27	.676/.682	.262/.294
RLA10-TH	T10	6	.562/14.27	.689/17.50	.328/8.33
RLA15-TH	T15	8	.562/14.27	.701/17.81	.391/9.93
RLA20-TH	T20	10	.562/14.27	.713/18.11	.458/11.63
RLA25-TH	T25	12	.875/22.23	.726/18.44	.521/13.23
RLA27-TH	T27	1/4	.875/22.23	.739/18.77	.583/14.81
RLA40-TH	T40	5/16	1.000/25.40	.889/22.58	.710/18.03
RLA45-TH	T45	3/8	1.250/1.500	1.164/1.198	.835/.963
RLA50-TH	T50	1/2	1.500/38.10	1.215/30.86	1.088/27.64



Oval Head

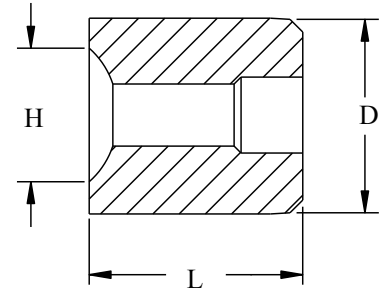
Part Number	Drive Size	Screw Size	D inch/mm	L inch/mm	H inch/mm
RLA10-OH	T10	5	.562/14.27	.656/16.66	.262/6.65
RLA15-OH	T15	6	.562/14.27	.659/16.74	.290/7.37
RLA20-OH	T20	8	.562/14.27	.664/16.87	.345/8.76
RLA25-OH	T25	10	.562/14.27	.671/17.04	.400/10.16
RLA27-OH	T27	12	.875/22.23	.678/17.22	.456/11.58
RLA30-OH	T30	1/4	.875/22.23	.687/17.45	.527/13.39
RLA40-OH	T40	5/16	.875/22.23	.829/21.06	.660/16.76
RLA45-OH	T45	3/8	1.000/25.40	1.094/27.79	.792/20.12
RLA50-OH	T50	7/16 & 1/2	1.000/1.250	1.097/1.104	.844/.910
RLA55-OH	T55	9/16 & 5/8	1.250/1.500	1.120/1.135	1.000/1.125



1. M2 material at RC 60-62
2. Special Head Styles, Head markings and Materials available upon request.

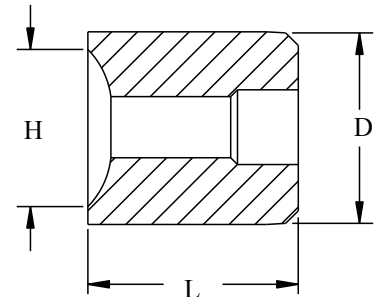
Pan Head - Full Crown

Part Number	Drive Size	Screw Size	D inch/mm	L inch/mm	H inch/mm
RLA8-PHF	T8	2 & 3	.562/14.27	.654/16.61	.179/4.55
RLA10-PHF	T10	4 & 5	.562/14.27	.663/16.84	.234/.5.94
RLA15-PHF	T15	6	.562/14.27	.668/16.97	.289/7.34
RLA20-PHF	T20	8	.562/14.27	.678/17.22	.345/8.76
RLA25-PHF	T25	10	.875/22.23	.686/17.42	.399/10.13
RLA27-PHF	T27	12	.875/22.23	.694/17.63	.455/11.56
RLA30-PHF	T30	1/4	1.000/25.40	.851/21.62	.526/13.36
RLA40-PHF	T40	5/16	1.000/25.40	.889/22.58	.658/16.71
RLA45-PHF	T45	3/8	1.000/25.40	1.122/28.50	.792/20.12



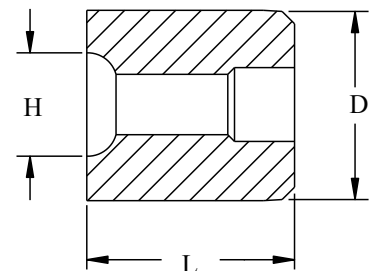
Fillister Head

Part Number	Drive Size	Screw Size	D inch/mm	L inch/mm	H inch/mm
RLA10-FRH	T10	4 & 5	.562/14.27	.656/16.66	.196/4.98
RLA15-FRH	T15	6	.562/14.27	.659/16.74	.242/6.15
RLA20-FRH	T20	8	.562/14.27	.664/16.87	.289/7.34
RLA25-FRH	T25	10	.562/14.27	.671/17.04	.335/8.51
RLA27-FRH	T27	12	.875/22.23	.678/17.22	.382/9.70
RLA30-FRH	T30	1/4	.875/22.23	.687/17.45	.443/11.25
RLA40-FRH	T40	5/16	.875/22.23	.829/21.06	.554/14.07
RLA45-FRH	T45	3/8	1.000/25.40	1.094/27.79	.667/16.94
RLA50-FRH	T50	7/16	1.000/25.40	1.100/27.94	.669/16.99
RLA55-FRH	T55	1/2 & 9/16	1.250/31.75	1.110/1.130	.803/20.40



Round Washer Head

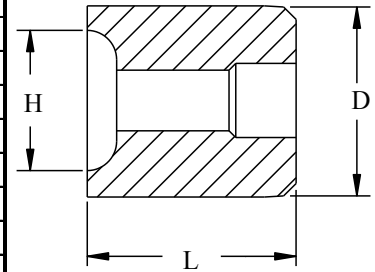
Part Number	Drive Size	Screw Size	D inch/mm	L inch/mm	H inch/mm
RLA10-RWH	T10	4 & 5	.562/14.27	.689/.695	.175/4.45
RLA15-RWH	T15	6	.562/14.27	.716/18.19	.223/5.66
RLA20-RWH	T20	8	.562/14.27	.718/18.24	.267/6.78
RLA25-RWH	T25	10	.875/22.23	.732/18.59	.293/7.44
RLA27-RWH	T27	12	.875/22.23	.781/19.84	.340/8.64
RLA30-RWH	T30	1/4	1.000/25.40	.774/19.66	.396/10.06



1. M2 material at RC 60-62.
2. Special Head Styles, Head markings and Materials available upon request.

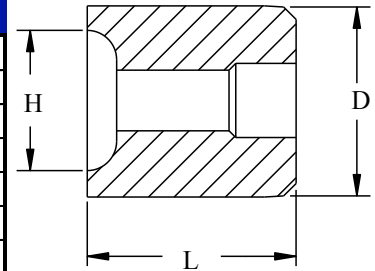
Metric Pan Head (DIN 7985)

Part Number	Drive Size	Screw Size	D inch/mm	L inch/mm	H inch/mm
RLA6-7985-M2	T6	M2	.562/14.27	.394/10.01	.171/4.34
RLA8-7985-M2.5	T8	M2.5	.562/14.27	.649/16.48	.214/5.44
RLA10-7985-M3	T10	M3	.562/14.27	.656/16.66	.262/6.65
RLA15-7985-M3.5	T15	M3.5	.562/14.27	.659/16.74	.290/7.37
RLA20-7985-M4	T20	M4	.562/14.27	.664/16.87	.345/8.76
RLA25-7985-M5	T25	M5	.875/22.23	.671/17.04	.426/10.82
RLA30-7985-M6	T30	M6	1.000/25.40	.687/17.45	.517/13.13
RLA45-7985-M8	T45	M8	1.000/25.40	1.074/27.28	.680/17.27
RLA50-7985-M10	T50	M10	1.000/25.40	1.097/27.86	.850/21.59



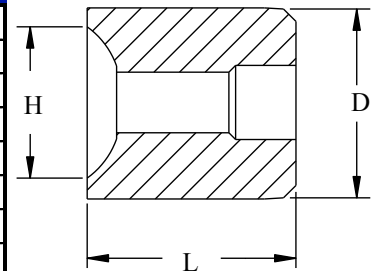
Metric Pan Head (DIN 7981)

Part Number	Drive Size	Screw Size	D inch/mm	L inch/mm	H inch/mm
RLA8-7981-M2.9	T8	M2.9	.562/14.27	.665/16.89	.240/6.10
RLA10-7981-M3.5	T10	M3.5	.562/14.27	.675/17.15	.297/7.54
RLA15-7981-M3.9	T15	M3.9	.562/14.27	.675/17.15	.325/8.26
RLA20-7981-M4.2	T20	M4.2	.562/14.27	.680/17.27	.352/8.94
RLA25-7981-M4.8	T25	M4.8	.875/22.23	.690/17.53	.410/10.41
RLA25-7981-M5.5	T25	M5.5	.875/22.23	.700/17.78	.460/11.68
RLA30-7981-M6.3	T30	M6.3	1.000/25.40	.710/18.03	.536/13.61



Metric Button Head (DIN 7380)

Part Number	Drive Size	Screw Size	D inch/mm	L inch/mm	H inch/mm
RLA10-7380-M3	T10	M3/3.5	.562/14.27	.675/.687	.235/.275
RLA15-7380-M4	T15	M4	.562/14.27	.692/17.58	.315/8.00
RLA25-7380-M5	T25	M5	.875/22.23	.715/18.16	.390/9.91
RLA27-7380-M6	T27	M6	.875/22.23	.735/18.67	.432/10.97
RLA40-7380-M8	T40	M8	1.000/25.40	.895/22.73	.575/14.61
RLA45-7380-M10	T45	M10	1.250/31.75	1.185/30.10	.720/18.29
RLA55-7380-M12	T55	M12	1.500/38.10	1.220/30.99	.862/21.89
RLA55-7380-M14	T55	M14	1.500/38.10	1.260/32.00	1.005/25.53



1. M2 material at RC 60-62
2. Special Head Styles, Head markings and Materials available upon request.